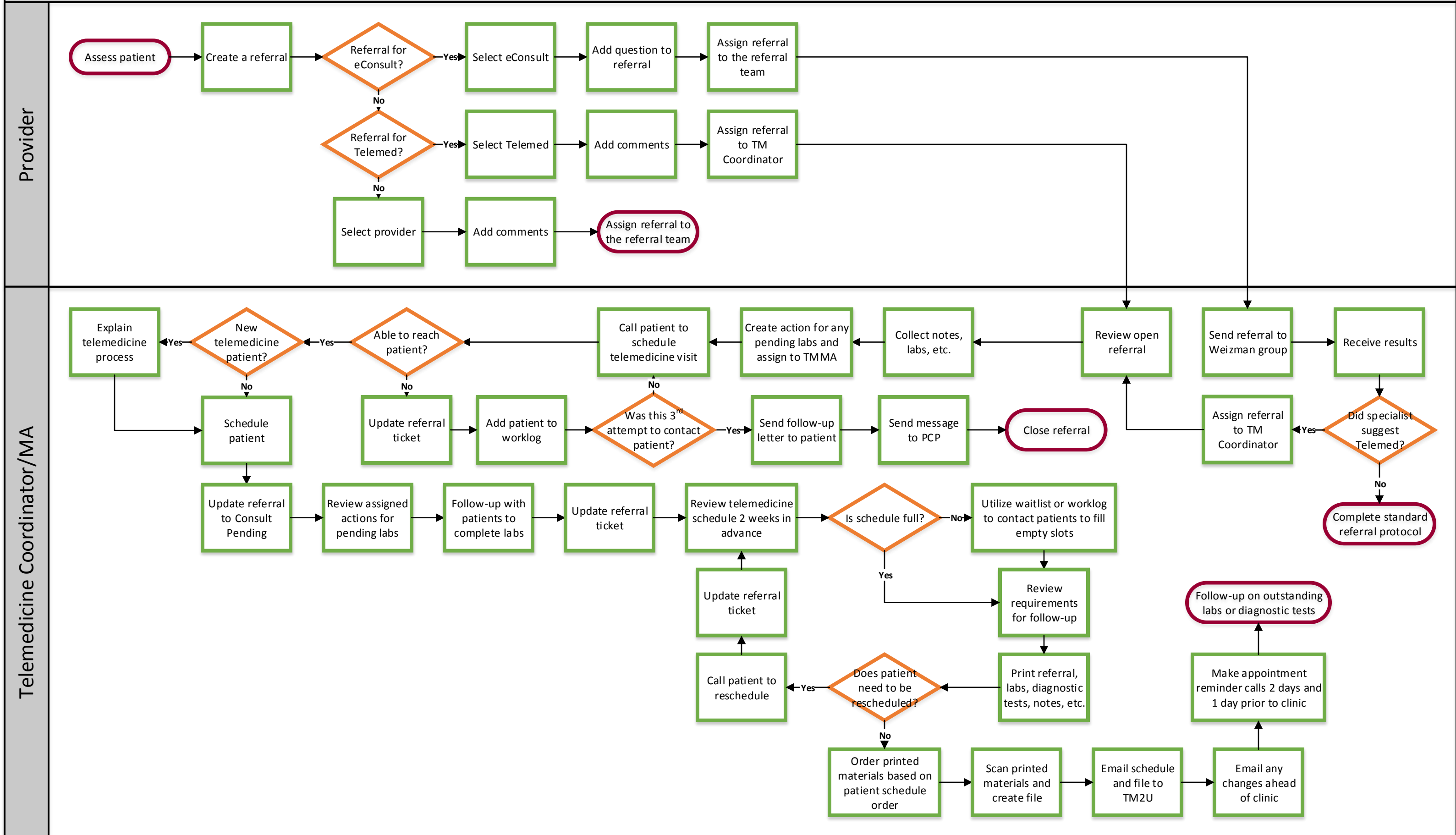


El Dorado Community Health Center – Future State: Telemedicine Referral

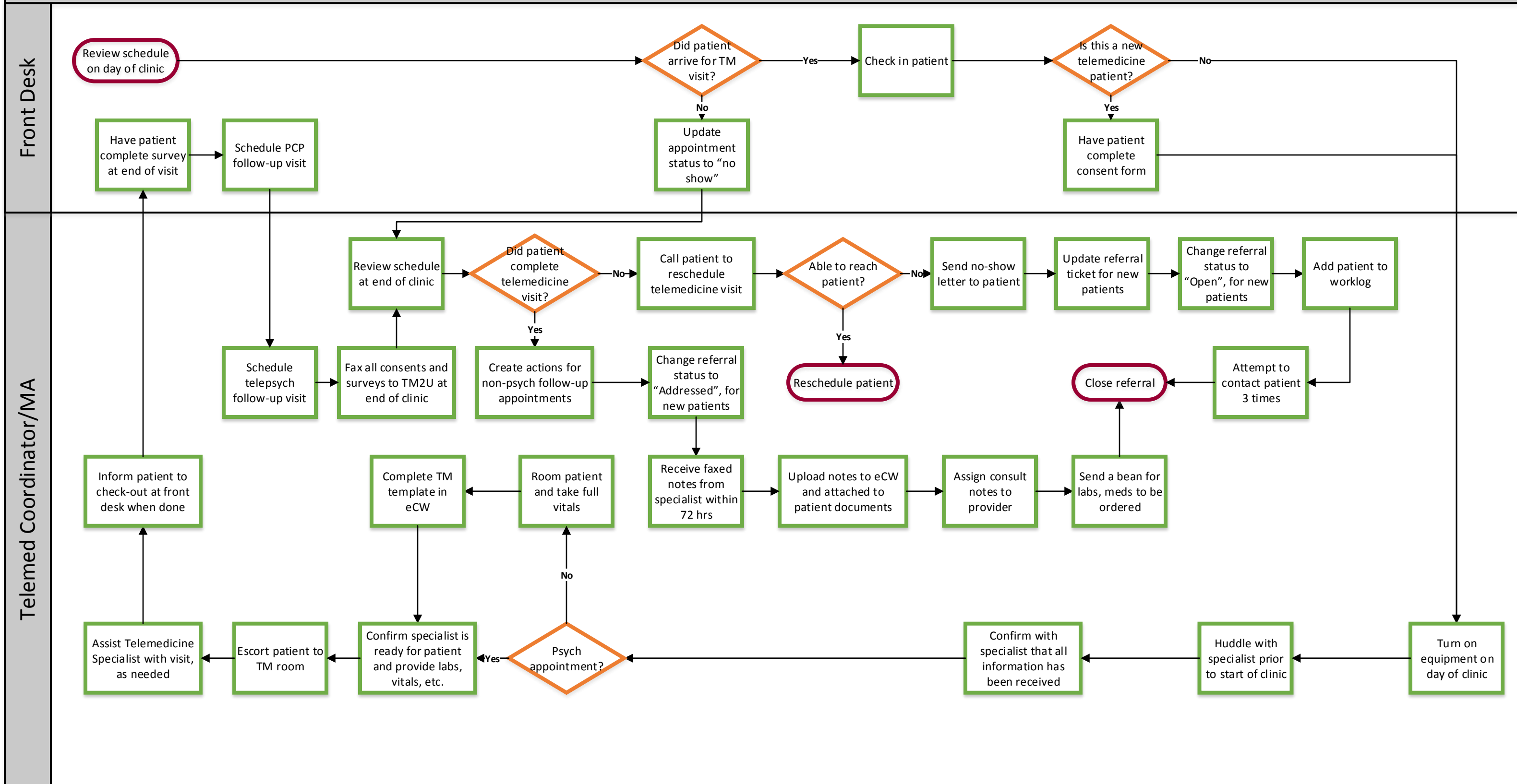
Workflow for completing a telemedicine referral from a primary care provider (PCP).

May 7, 2019



El Dorado Community Health Center – Future State: Telemedicine Appointment

Workflow for completing a telemedicine visit.
May 7, 2019





Process Start or End

Indicates the start and end points of a process



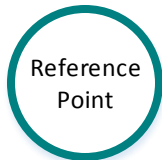
Process Step

A specific process step, task or activity that is performed



Decision Point

A point in the process where a yes/no question is required



Reference Point

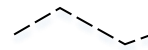
Indicates a reference or connection to another workflow



Indicates Meaningful Use Reporting



Indicates UDS Reporting



Indicates a Reference Point that is not part of a Decision Point