

Addiction Treatment Starts Here: Behavioral Health



**Kick-Off
Webinar**
May 30, 2019

Webinar Reminders

1. Everyone is muted.

- Press *7 to unmute and *6 to re-mute yourself.

2. Remember to chat in questions!

3. Webinar is being recorded and will be sent out via email and posted to the program page!

Agenda

1. Welcome & Introductions
2. Addiction Treatment Starts Here: Behavioral Health
3. Program Expectations
4. Getting to Know One Another
5. Calendar + Resource Center
6. Pre-Work Preview
7. Questions + Answers

Welcome + Introductions

About The Center for Care Innovations (CCI)

At the Center for Care Innovations we ...



Inspire innovation mindsets



Cultivate & share best practices



Build networks



Enrich skills

So that our participants ...

Boost their energy & confidence to work differently

Embrace solutions that work

Collaborate & learn from peers, experts & coaches

Accelerate the pace of change

Who then transform their organizations by ...

Creating a culture of innovation

Improving systems of care and health

Cultivating the workforce, turning doers into leaders

Listening & engaging people in their community

Adapting to the ever-changing health care environment

Strengthening the health and health care of underserved communities

We Are



Addiction Treatment Starts Here

We're joining California efforts to combat the state's opioid crisis

CLINICAL TRANSFORMATION

MULTI-SECTOR COLLABORATION



PRIMARY CARE

Primary Care Health Centers



BEHAVIORAL HEALTH

Specialty Mental Health and Substance Use Disorder Treatment Providers



COMMUNITY PARTNERSHIPS

Community Opioid Coalitions

We Help You

Boost your energy and confidence to work differently

Embrace solutions that work through virtual and in-person learning

Collaborate with your peers, experts, and coaches

Accelerate the pace of change

Build community

Goal

Increase access to **medications for addiction treatment (MAT)** – the use of FDA-approved medications in combination with counseling and behavioral therapies – for opioid use disorder.



Addiction Treatment Starts Here: Core Program Team

Primary Care + Behavioral Health Collaboratives



Tammy Fisher
Senior Director
tammy@careinnovations.org



Sandy Newman
Principal, LSN Health Strategy
sandy@lsnhealthstrategy.com



Meaghan Copeland
Program Consultant
meaghan@careinnovations.org



Brianna Harris-Mills
Program Coordinator
brianna@careinnovations.org

Community Partnerships



Jennifer Wright
Improvement Advisor
jennifer@careinnovations.org



Diana Nguyen
Program Coordinator
diana@careinnovations.org

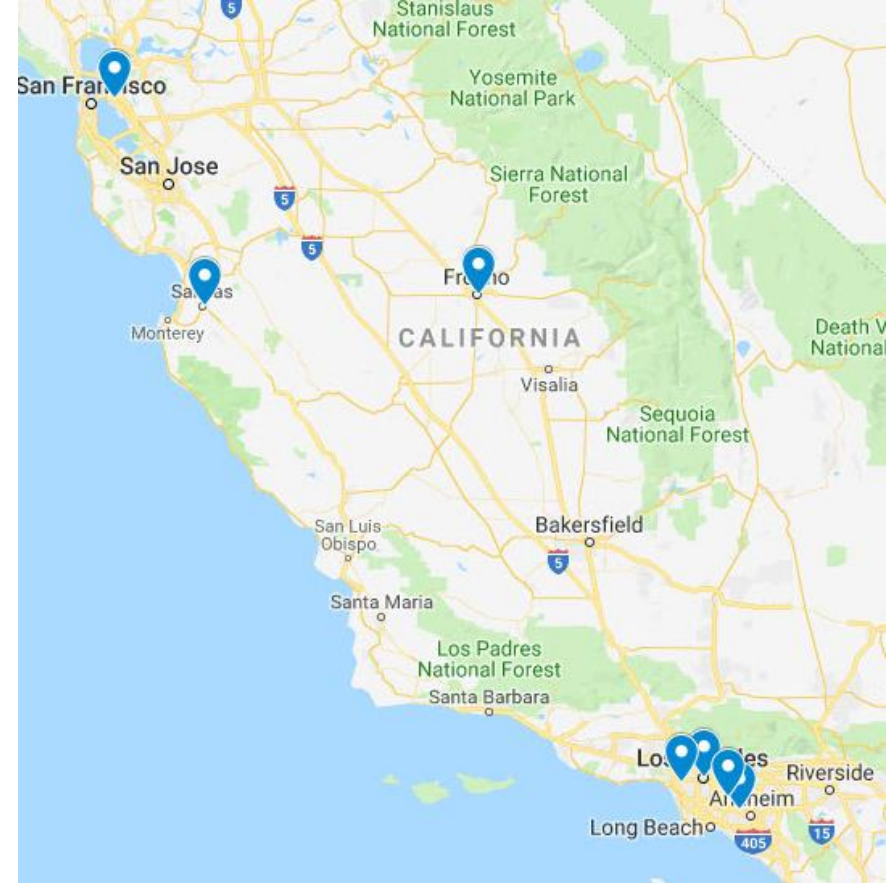
ATSH:BH Project Partners

- Content Partner: Cherokee Health Systems
- ATSH Coach: Shelly Virva, LCSW, FNAP, National Center for Complex Health and Social Needs, Camden Coalition of Healthcare Providers
- Project Evaluation: Hunter Gatewood, Signal Key Consulting

Addiction Treatment Starts Here: Behavioral Health

ATSH: BH Cohort At a Glance*

- Alameda County Behavioral Healthcare-SUD Div.
- Asian Health Services
- Chinatown Service Center
- Didi Hirsch Mental Health Services
- Fresno New Connection
- KCS
- LA Centers for Alcohol and Drug Abuse (L.A. CADA)
- Valley Health Associates

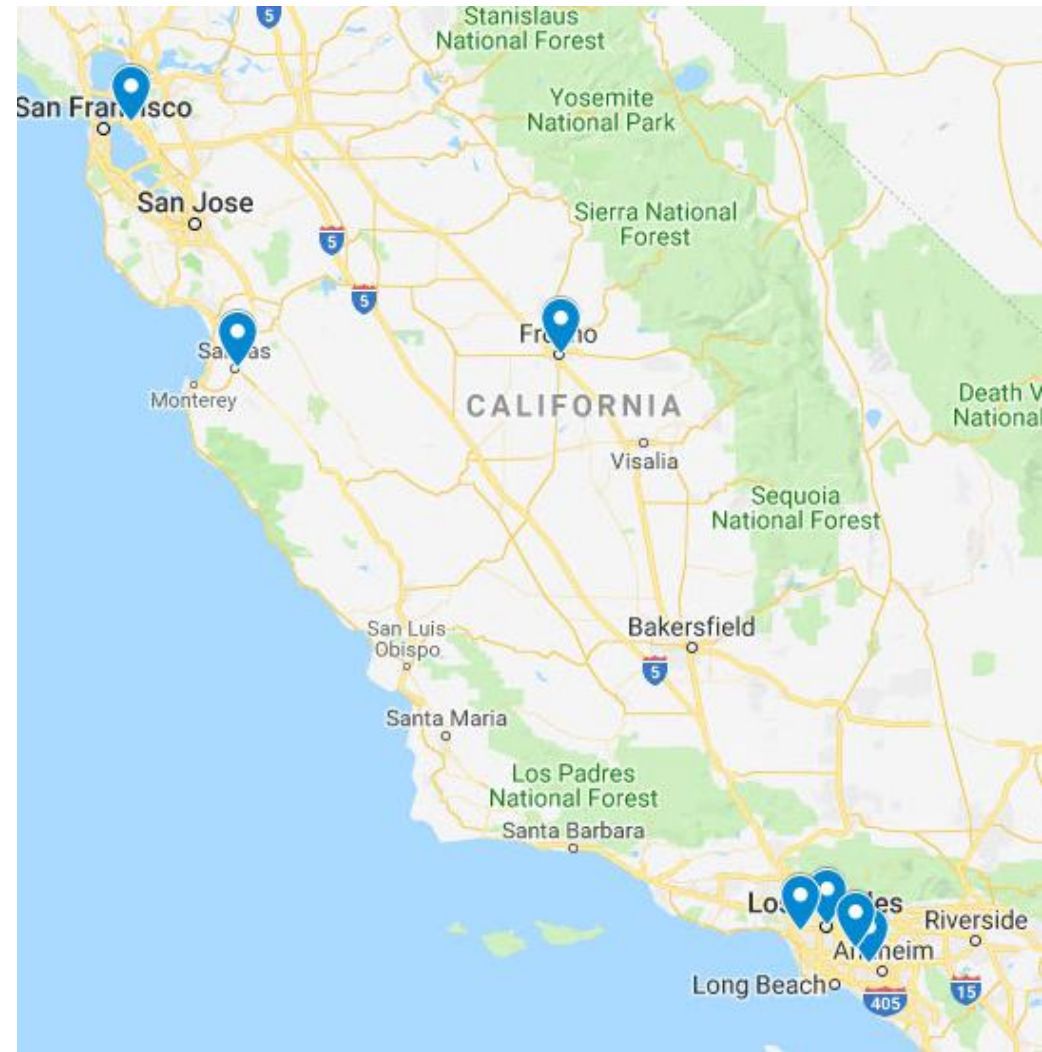


*This list is based on CCI's recommendation. The grant award is not final until approved by the Tides Center CEO and Board of Directors.

ATSH:BH Cohort At a Glance

Organization Characteristics

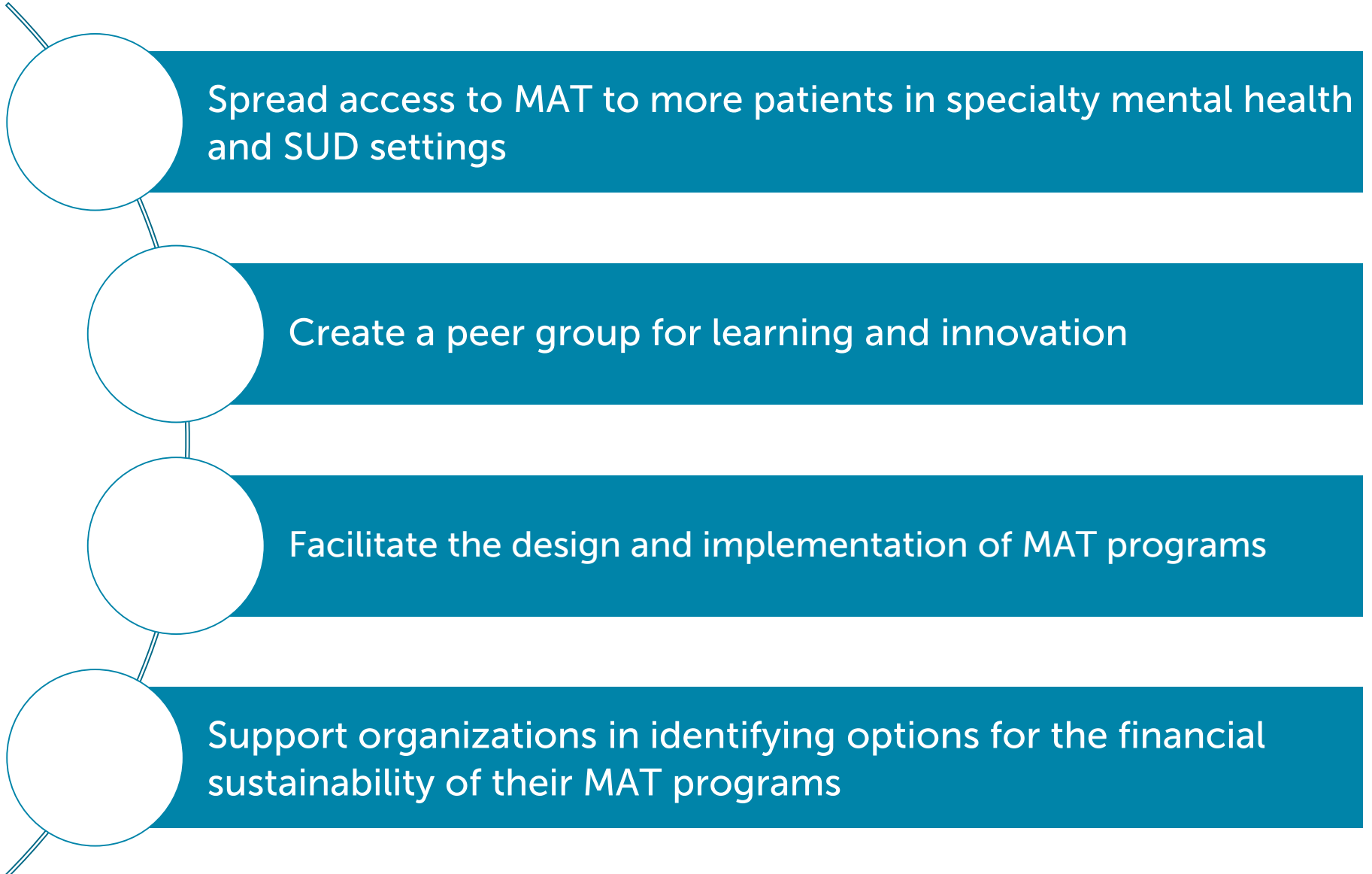
- Demographics:
 - 8 teams in 5 counties across California
 - Participants include clinics of various sizes:
 - 2 teams serve > 300 patients
 - 4 teams serve 5,000 – 10,000 patients
 - 2 teams serve < 28,000 patients
- Several types of organizations:
 - 3 Outpatient Specialty Mental Health Clinics
 - 2 Outpatient Alcohol & Drug Treatment Clinics
 - 1 FQHC with an outpatient alcohol & drug treatment site
 - 1 County Health System
 - 1 Opioid Treatment Program



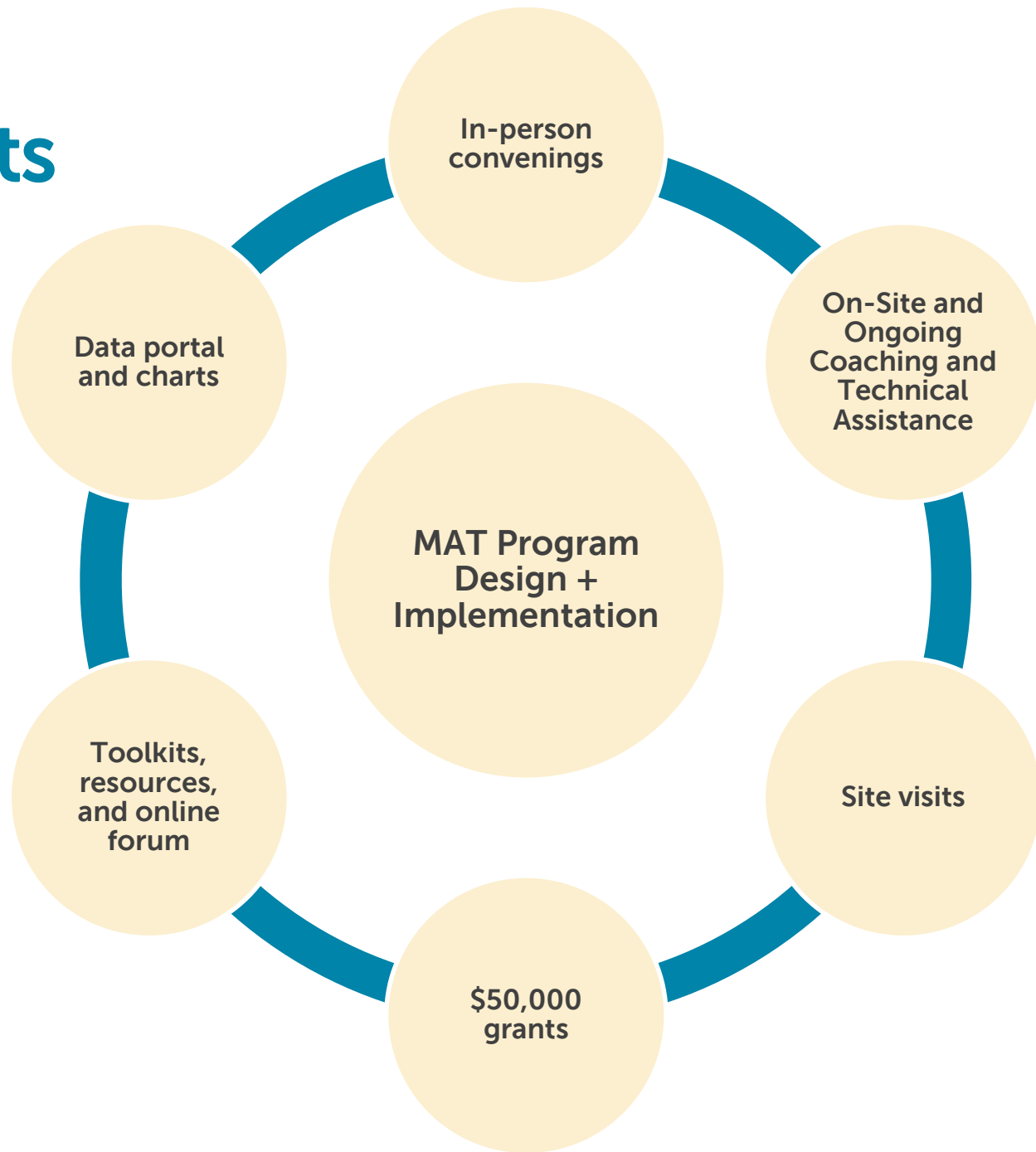
ATSH: Behavioral Health Program Goal

Increase access to **MAT** in behavioral health care settings by working with 8 specialty mental health and substance use disorder providers to design and implement medications for addiction treatment programs

Key Objectives



Program Components

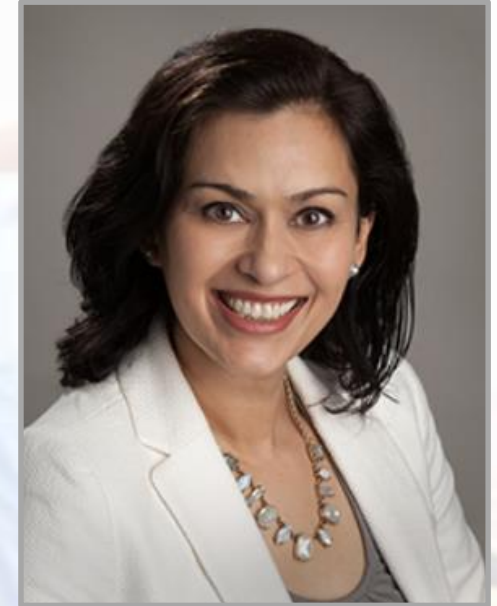


Program Components Described

3 In-Person Convenings	Peer sharing and best practice exchange, facilitated by CCI and national and peer experts. Each convening is 1.5 days.
On-Site and On-Going Coaching	Your clinic coach will work with you to learn more about your team and current capabilities and support your goals with targeted technical assistance.
Site Visits	Visit sites with mature MAT programs to learn about workflows, program development, and other programmatic elements.
Webinars	Foster networking and deeper knowledge sharing on specific topics that emerge as priorities for ATSH:BH teams.
Online Resource Center	A repository of tools and resources from the field and as shared by your peers.
Data Portal + Charts	Easily report on the project's measures and view run charts to track your progress over time.
\$50,000 Grants	Funding can be used to support attendance at learning sessions, offset staff salaries, program development costs, etc.

Cherokee Health Systems

- Cherokee Health Systems is a non-profit organization that provides primary care, behavioral health, and addiction services to over 70,000 people living across Tennessee.
- Cherokee Health Systems provides a continuum of behavioral health services, including:
 - Outreach and community collaboration (e.g., criminal justice), psychiatric medication management, peer support, care management, care coordination, MAT + group medical visits, extended outpatient and intensive outpatient and adjunctive group psychotherapy



Parinda Khatri, PhD
Chief Clinical Officer



buprenorphine

ED-Bridge

workflows

referrals retention integration

MAT pain procedures
readiness groups

engagement

sustainability

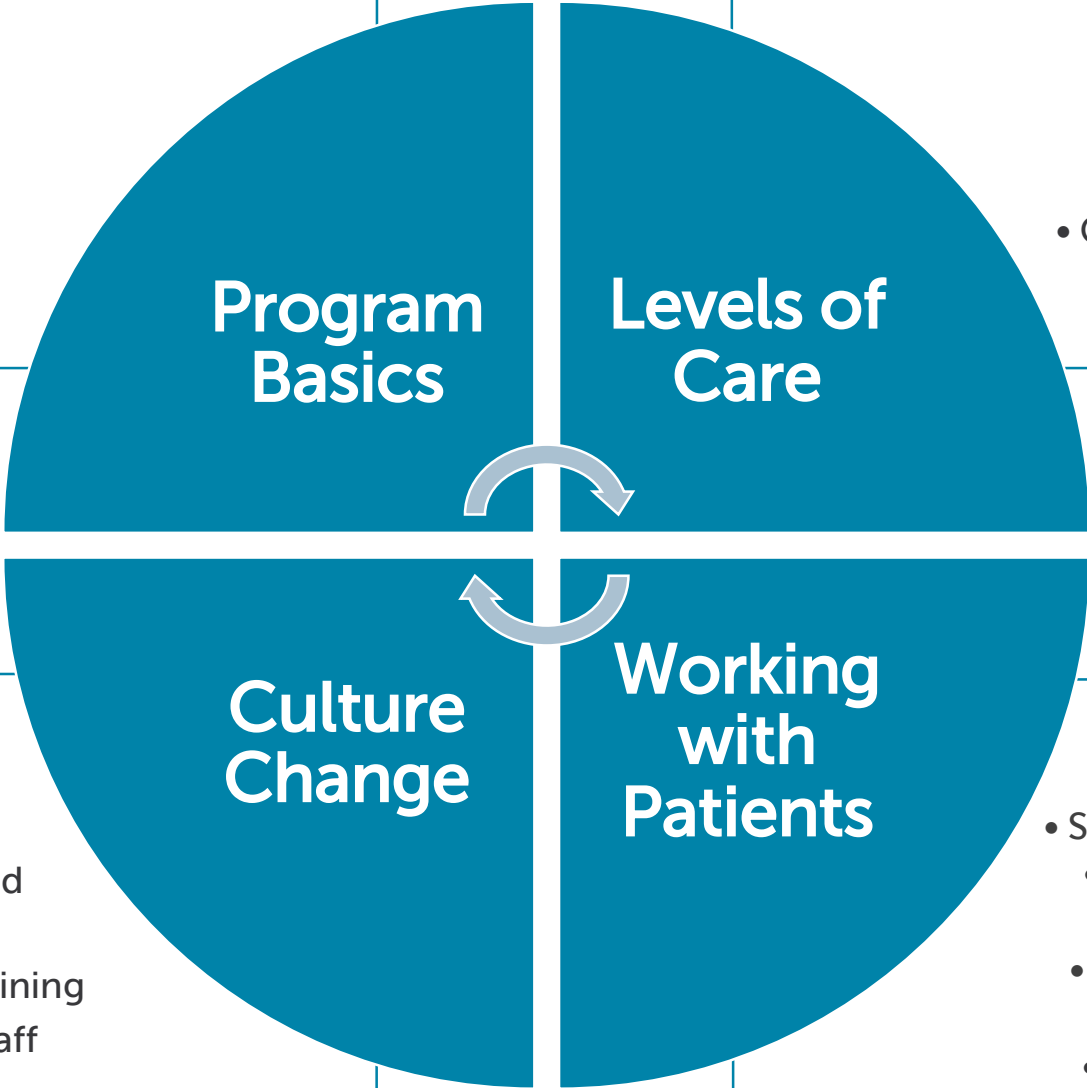
education workflow interventions
policies

Screening stigma
neuroscience

access

training Protocols

- Neuroscience of addiction
- Understanding MAT medications
- Models for design and implementation
- Screening protocols
- Patient retention



Program Basics

Levels of Care

- Matching patients to needed care
 - Care coordination
 - Referral relationships
 - Partnerships with community providers
 - Connecting patients with resources

Culture Change

Working with Patients

- Getting buy-in
- Understanding bias and stigma
- Organization-wide training
- Engaging clinicians/staff
- Redefining roles

- Treatment readiness
- Strong behavioral support
 - Managing co-occurring disorders
- Addressing psychosocial stability
- Managing pain and pain behaviors

Getting to Know One Another

Warm-Up: MAT Spirit Animal

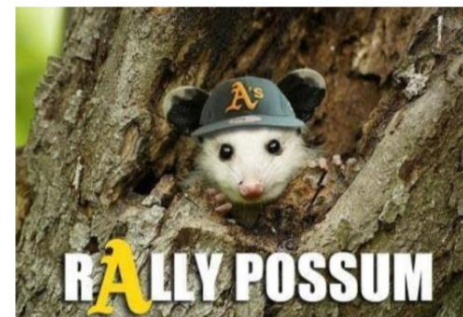
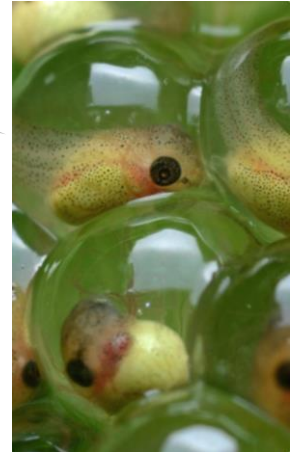
What **animal** reflects your stage of MAT program development?



Team Warm-Up: MAT Spirit Animal

- What animal reflects your stage of MAT program development?
- In 1 – 2 minutes, each team shares:
 - Your clinic's name
 - Your team member's names
 - Clinic type (e.g., specialty mental health, SUD, etc.)
 - Your spirit animal
 - Why you picked it

Tadpole!



Opossum!

Program Expectations

Participation Requirements

The diagram features six circular nodes arranged in two rows of three. The top row contains 'Engaged Leadership' (yellow), 'Reporting Data on Measures' (teal), and 'Peer Sharing' (orange). The bottom row contains 'Continuity & Dedicated Team' (yellow), 'Active Participation' (teal), and 'Willingness to Experiment' (orange). The background is a light gray with faint silhouettes of human heads and various gears, suggesting a process of collective thought and collaboration.

Engaged Leadership

Reporting Data on Measures

Peer Sharing

**Continuity
&
Dedicated
Team**

**Active
Participation**

**Willingness
to Experiment**

The Give & The Get

Give	Get
<ul style="list-style-type: none">▪ Commitment to start, improve and/or expand MAT in your site▪ Establish a core team, with a minimum of an x-waivered clinician, project manager, and senior leader<ul style="list-style-type: none">- Core team attends all in-person learning sessions- Core team meets regularly▪ Share your experiences and tools with others▪ Submit data on small measure set (quarterly)	<ul style="list-style-type: none">▪ Access to technical assistance and experts to help you design your program▪ Participate in a learning community that optimizes peer sharing▪ Coaching▪ Site visits to learn from peers▪ \$50,000 per site to offset travel expenses to in-person sessions▪ Online resource center



Elements of an Effecting Coaching/Clinic Partnership

- Establishing a **warm, listening, collaborative relationship** with the MAT team and to have a point of contact is essential!
- An effective coach understands how specialty mental health and substance use disorder systems operate.
- The initial site discussion will allow the coach to get to know the team, hear concerns and priorities, make a complete needs assessments and develop a working plan with you.
- Availability of the MAT coach for ad hoc questions or a quick case review keeps things moving and builds confidence. **A coach must be a good problem solver for systems challenges and for the challenges in patient care.**
- Clinics usually want help with designing achievable goals based on their current infrastructure, improving workflow, developing treatment agreements, billing, clinic culture and policies and procedures.



Calendar + Program Page

Mark Your Calendars! Major Events!

- June 3: Pre-Work Webinar
- June 24: Program Measures Webinar
- July 10 – 11, 2019: Learning Session 1 (Downtown Oakland)
- March 18 – 19, 2020: Learning Session 2 (location tbd)
- July 22 – 23, 2020 Learning Session 3 (location tbd)

July 10: 12:00 pm – 5:00 pm
(lunch and registration at 11:00 am; networking hour at 5 pm)

July 11: 8:30 am – 4:00 pm
(breakfast and registration at 8:00 am)



Project Calendar

May 2019 – December 2019

January 2020 – September 2020

May 15	Project Kick-Off!	Quarterly Data Submission Due	January 15
May 15	Grant Installment 1 Released (\$5,000)	Grant Installment 3 Released (\$20,000)	January 31
June 3	Pre-Work Webinar	Learning Session 2 (location tbd)	March 18 – 19
June 24	Data Portal (program measures) Webinar	Quarterly Data Submission Due Progress Report 2 Due (narrative)	April 15
June 28	Capability Assessment Due (template released on June 10)	Quarterly Data Submission Due	July 15
July 1	Storyboard Due	Learning Session 3 (location tbd)	July 22 - 23
July 10 – 11	Learning Session 1 (Oakland)	Final Report Due (narrative + final expenditures)	August 31
July 30	Grant Installment 2 Released (\$15,000)	Grant Installment 4 Released (\$10,000)	September 15
July 31	Quarterly Data Submission Due		
October 15	Quarterly Data Submission Due Progress Report 1 Due (narrative)		



ATSH Program Page

STAY UP-TO-DATE!

Addiction Treatment Starts Here: Behavioral Health Program Page

ACTIVITIES

RESOURCE HUB

DATA & REPORTING

FACULTY & TEAMS

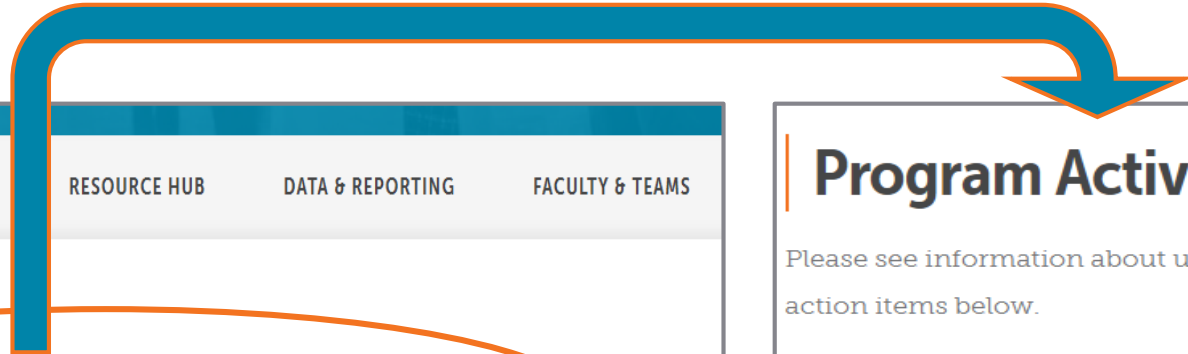
Navigation: [Activities & Action Items](#) | [Learning Sessions](#) | [Webinars](#)

HELLO, ADDICTION TREATMENT STARTS HERE: BEHAVIORAL HEALTH (ATSH:BH) TEAMS!

This section of the website provides information on ATSH:BH activities, including webinars, learning sessions, and program reporting requirements. More information on these activities and action items is included below.

Visit: <https://www.careinnovations.org/atshbehavioralhealth-teams/>

ATSH Program Page



Navigation: [Activities & Action Items](#) | [Learning Sessions](#) | [Webinars](#)

HELLO, ADDICTION TREATMENT STARTS HERE:BEHAVIORAL HEALTH (ATSH:BH) TEAMS!

Check **Activities & Action Items** for updates about upcoming webinars, events, and more. This is where we'll include registration links, pre-work assignments and other "to-dos."

Program Activities

Please see information about upcoming program activities and action items below.

DATE/TIME	ACTIVITY DETAILS
May 30 12-1pm	Kickoff Webinar: CCI hosts a kickoff webinar for organizations participating in the Addiction Treatment Starts Here:Behavioral Health collaborative. Register here.
June 3 1-2pm	Pre-Work Webinar: CCI hosts a pre-work webinar to introduce the pre-work elements to prepare ATSH:BH teams for the first in-person learning session in July 2019. Register here.
June 24 12-1pm	Data Portal Training Webinar: CCI hosts a webinar to review the measurement strategy for ATSH:BH and provides training for how to use the data portal to submit quarterly data. Register here.
July 10-11	In-Person Learning Session #1: CCI hosts its first learning session for the ATSH:BH collaborative. Click here for event details
July 31	Q1 Data Report due

Pre-Work Preview

What's On Monday's Pre-Work Webinar



Capability Assessment



Storyboard



Program Measure Set (highlights, more detail on data submission process provided to your data point person on the June 24th webinar)

Questions + Answers

Thank you!

For questions contact:

Tammy Fisher
Senior Director
Center for Care Innovations
tammy@careinnovations.org

Sandy Newman
Principal
LSN Health Strategy
sandy@lsnhealthstrategy.com